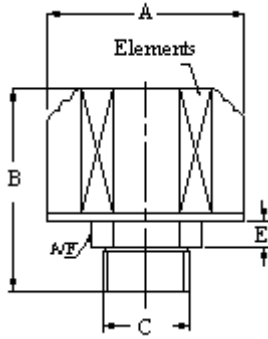
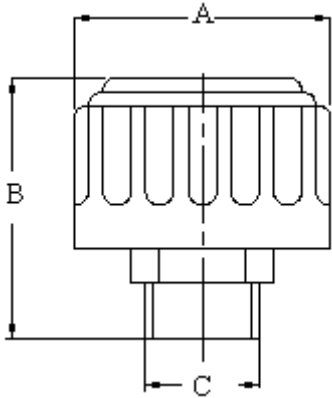


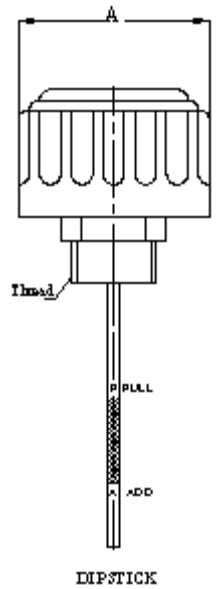
BREATHER – TB

FLUDEN

- Chrome Plated steel cap
- Filtration 40 micron standard /optional 10 & 3 micron
- Air filtration 5 to 25 CFM (750 LPM)



MODEL	DESPLACEMENT	RATING MICRONS	A B		STD C IN BSP /NPT	E	A/F	WEIGHT KGS
			A	B				
TB - 05	5 CFM/ 150 LPM	40	46	63	1/4"		19	0.1
TB-05-10	5 CFM/ 90 LPM	10	46	63	3/8"	8	22	0.8
					1/2"		25	0.7
TB - 25	25 CFM/ 720 LPM	40	77	75	3/4"		32	0.22
				75	1"	10	41	0.18
				75	1.1/4"		50	0.34
TB-25-10	25 CFM/ 400 LPM	10	77	75	1.1/2"		55	0.34



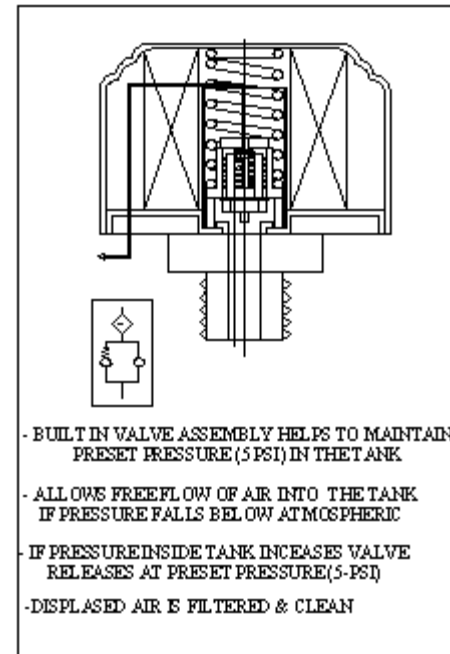
DIPSTICK

Tolerance : + 1 MM

MODEL CODE : ASSEMBLY

TB	5	10	**		P
Series	Capacity	FILTRATION	THREAD		FEATURE
	CFM	μ MICRONS	OPTINAL		SPECIAL #
TB	5	40 - 40 μ STD	02 - 1/4" 03 - 3/8" 04 - 1/2" 08S - 20 X 1.5 08S - 22 X 1.5	B - BSP N - NPT	P5 - Pressurized 5psi SG - SPLASH GUARD DS 4 - DIP STICK 115 MM
TB	25	10 -10 μ NOM 03 - 3 μ NOM	06 - 3/4" 08 - 1" 16S - 1.1/4" 16S - 1.1/2" 16S - 20 X 1.5 16S - 22 X 1.5	B - BSP N - NPT	DS 6 - DIP STICK 198 MM DS 8 - DIP STICK 290 MM

P - PRESSURE

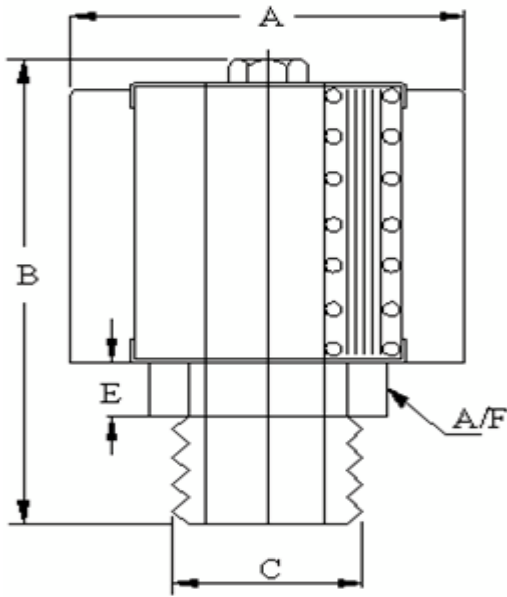


- BUILT IN VALVE ASSEMBLY HELPS TO MAINTAIN PRESET PRESSURE(5 PSI) IN THE TANK
- ALLOWS FREEFLOW OF AIR INTO THE TANK IF PRESSURE FALLS BELOW ATMOSPHERIC
- IF PRESSURE INSIDE TANK INCREASES VALVE RELEASES AT PRESET PRESSURE(5-PSI)
- DISPLACED AIR IS FILTERED & CLEAN

(*) PRODUCT UNDER DEVELOPMENT

OPTIONAL / SPECIAL FEATURE (CONSULT FACTORY) – OMIT IF NOT REQUIRED

DIMENSIONS IN MM FOR REFERENCE ONLY



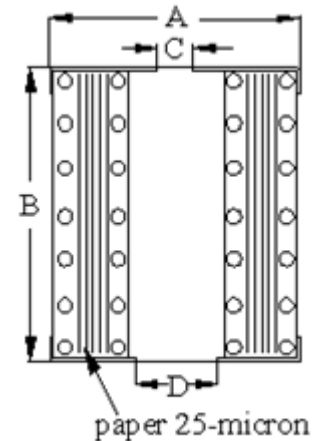
MODEL	DISPLACEMENT	RATING MICRONS	A	B	C STD IN BSPP	A/F	≡	WEIGHT KGS
TB - 35	35 CFM/ 1000 LPM	10	113	145	1 - 1/2"	55	12	0.68
TB - 65	65 CFM/ 2000 LPM	10	140	165	2"	65	15	0.99
TB-165	165 CFM/ 4000 LPM	10	176	200	2 - 1/2"	92	20	1.87
TB-165	165 CFM/ 4000 LPM	10	176	190	3"	115	10	1.87
TB-165	165 CFM/ 4000 LPM	10	176	190	4"	115	10	1.87

MODEL CODE:- ASSEMBLY

TB	5	10	**
Series	Capacity CFM	FILTRATION μ MICRONS	THREAD OPTIONAL
TB	35	10 -10 μ NOM	10 - 1.1/4" 12 - 1.1/2" B - BSP N - NPT
	65	10 -10 μ NOM	16S - 2" B - BSP N - NPT
	165	10 -10 μ NOM	20 - 2.1/2" B / N
	165	10 -10 μ NOM	20 - 3" B / N
	165	10 -10 μ NOM	20 - 4" B / N

ELMENT MODEL CODE :- ASSEMBLY

TBE	A	B	C	D	SCREEN AREA
TBE - 35	81	105	36	6.5	355
TBE - 65	100	117	47.5	6.5	530
TBE- 165	147	152	65	8.5	887

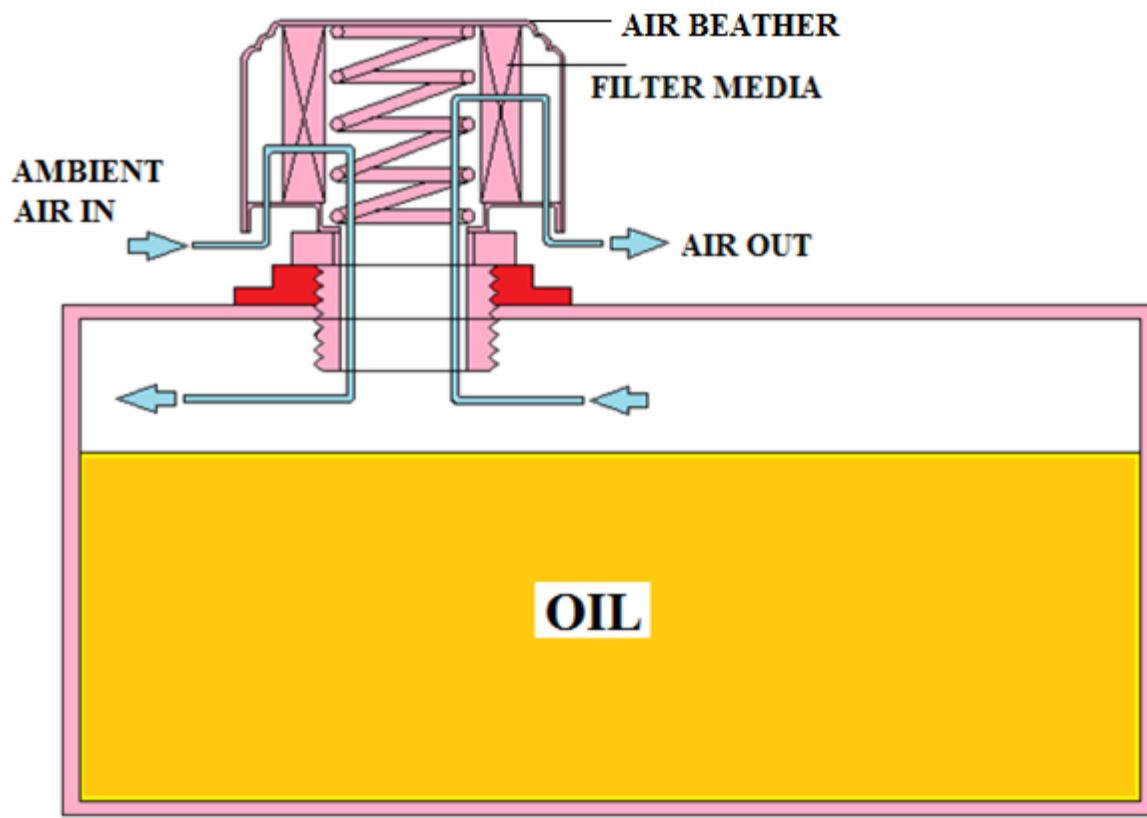


TOLERANCE: ±1 MM

(z) **PRODUCT UNDER DEVELOPMENT**

OPTIONAL / SPECIAL FEATURE (CONSULT FACTORY) – OMIT IF NOT REQUIRED

DIMENSIONS IN MM FOR REFERENCE ONLY



APPLICATION OF AIR BEATHER