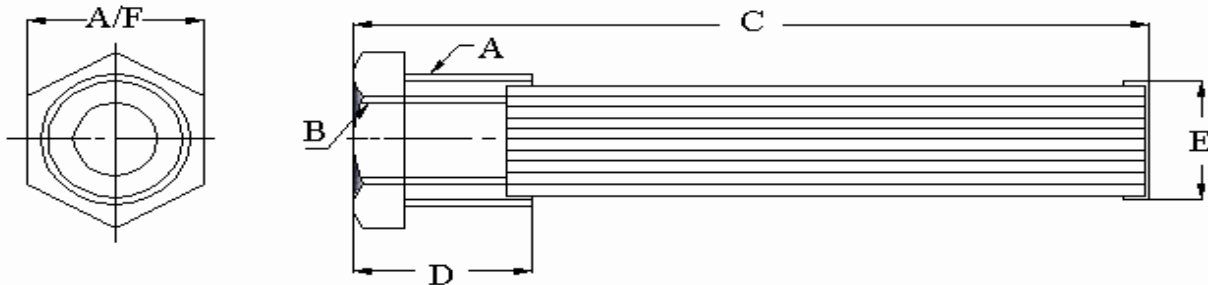


- TANK MOUNTED REUSABLE STRAINER
- SIDE WALL OR TANK TOP MOUNTING
- FLOWS TO 200 GPM (800 LPM)
- STAINLESS STEEL PLEATED MEDIA
- 100 MESH ( 149 MICRON ) STANDARD
- M.S. / C.I. BUSHING



Series	Nut	Bushing Size		LPM / GPM	Screen Area	Dimensions			WT.	
		Dim.A x Dim.B	N.P.T			Rating	SQ. IN.	C		D
TMS - 003	MS	3 / 4" x 3 / 8"		012 / 3	30	101.6	25	20	30	0.13
TMS - 005	MS	1" x 1 / 2"		020 / 5	55	137.0	28	28	38	0.20
TMS - 010		1 - 1 / 4" x 3 / 4"		040 / 10	90	190.0	31	35	46	0.35
TMS - 015	MS	1 - 1 / 2" x 1"		060 / 15	110	210.0	33	45	50	0.41
TMS - 025	CI	2" x 1 - 1 / 4"		100 / 25	175	254.0	33	51	66	0.62
TMS - 030	CI	3" x 1 - 1 / 4"		120 / 30	265	260.0	43	81	66	1.12
TMS - 040	CI	3" x 1 - 1 / 2"		160 / 40	265	260.0	43	81	66	1.12
TMS - 050	CI	3" x 2"		200 / 50	265	260.0	43	81	82	1.12
TMS - 060	CI	3" x 2 - 1 / 2"		240 / 60	265	260.0	51	81	90	1.25
TMS - 075	CI	4" x 2 - 1 / 2"		300 / 75	300	246.0	46	97	118	2.10
TMS - 100	CI	4" x 3"		400 / 100	355	287.0	46	97	118	1.75
TMS - 200	AL	6" x 4"		800 / 200	860	316.0	58	147	144	2.67

**TOLARNCE = ± 1MM**

**MODEL CODE : ASSEMBLY**

TMS	0 0 5	-149		RB3	
SERIES	SIZE	NPT THD NORMS STD		MICRONS	OPTIONAL
		THD 'A'	THD 'B'		
	0 0 3	0 6 N	0 3 N		
	0 0 5	0 8 N	0 4 N		
	0 1 0	1 0 N	0 6 N		
	0 1 5	1 2 N	0 8 N	149 - SS 100 MESHSTD	RB 3 3 P.S.I BYPASS VALVE
	0 2 5	1 6 N	1 0 N	125 - SS 120 MESH	(OMIT IF NOT REQD.)
	0 3 0	2 4 N	1 0 N	100 - SS 150 MESH	
TMS	0 4 0	2 4 N	1 2 N	074 - SS 200 MESH	
	0 5 0	2 4 N	2 0 N	063 - SS 250 MESH	
	0 6 0	2 4 N	2 0 N	Also - 30 / 60 MESH	
	0 7 5	3 2 N	2 0 N	(OMIT IF STD).	
	1 0 0	3 2 N	2 4 N		
	2 0 0	4 8 N	3 2 N		

**Recommended Weld Flange**  
To Be Ordered Separately

TWF - 0 6 N  
TWF - 0 8 N  
TWF - 1 0 N  
TWF - 1 2 N  
TWF - 1 6 N  
TWF - 2 4 N  
TWF - 2 4 N  
TWF - 2 4 N  
TWF - 2 4 N

CONTACT FACTORY FOR OPTIONAL FEATURE

DIMENSIONS IN MM FOR REFERENCE ONLY

**PRODUCT UNDER DEVELOPMENT**

# APPLICATION OF THE TANK MOUNTED STRAINER

