

Fluid Power Engineers, is established in 1989 and engaged in manufacturing and supplying Suction Strainer, Return Line Filter- Tank Mounted & Line Mounted, Flow Diffuser, Oil Level Indicators, Air Breather, Curved Tooth Gear Coupling, Filter Elements, Pipe Clamps, Check Valve and Hydraulic Accessories in India and exporting the products to many countries. i.e. USA, Greece, South Africa, Australia, Chile, Denmark, New Zealand etc. The company is 'ISO 9001 : 2008 certified.

The company is situated in well developed industrial city of Gujarat – western India. Equipped with latest technology and well trained human resources.

Application of the products manufactured by company is in mechanical industries, machine tools, construction machinery, earth moving machinery and all equipment oil hydraulically operated.

**We are committed to achieve total customer satisfaction and leadership in the market by:**

- Complying with products and quality system requirements
- Supplying consistent quality products to our valued customers
- Continually improving effectiveness of quality management system
- Utilizing all available resources effectively
- Creating an environment of team work, positive attitude and innovative approach

## We Export World Wide



AN ISO 9001 : 2008 Certified Company

**FLUID  
POWER  
ENGINEERS**

L-606, G.I.D.C Industrial Estate  
Nr. Odhav Police Station, Odhav  
Ahmedabad – 382415, Gujarat, India.  
Phone : +91 – 79 – 2287 4011 , 2289 1665/66  
E – mail : info@fluden.com & info@fluden.in  
Web site : www.fluden.com & www.fluden.in

Doc: imedia 3125051-105



**FLUDEN**<sup>®</sup>  
HYDRAULIC ACCESSORIES

SINCE : 1989

## SUCTION STRAINER

ALUMINIUM DIE CAST NUT - STR4



STEEL NUT STRAINER - SC2



BIG STRAINER - SC2 200 TO 600



NYLON STRAINER (NSS)



MODEL	THREADED	SIZE	FLOW	FILTRATION MICRON
STR4-002 TO STR4-150	BSP / NPT	1/4" TO 3"	4 LPM TO 600 LPM	149 SS 100 MESH STD 30 TO 250 MESH ALSO AVAILABLE
SC2 - 001 TO SC2 - 150				
NSS - 007 TO NSS - 100				
SC2 - 200 TO SC2 - 600				

## TANK MOUNTED REUSABLE STRAINER

Side wall or Tank top mounting  
Model : TMH, TMSU, TMA TMS For  
size contact to factory



## OIL LEVEL INDICATOR

FACE TYPE OIL LEVEL INDICATOR - OLI

'O' Ring type construction for non pressurized tank only available in 3,4,5,6 & 10 inch between bolt center

Note: Transparent Polyamide material is available on demand.



L TYPE OIL LEVEL INDICATOR (LT-OLI)

'O' Ring type construction for non pressurized tanks only

Model : 3,4,5,6,8,10,12,15 & 20 inch



KNOB TYPE OIL LEVEL INDICATOR (T.P.)

Note : Transparent polycarbonate suitable for mineral / petroleum based oil.

Size : 1/4", to 1" BSP / NPT  
and M16 x 1.5 to M - 40 x 1.5



KNOB TYPE OIL LEVEL INDICATOR  
ALUMINIUM

Aluminium resistant to solvents. Oils with additives, Greases, acid and alkali, water based Fluids. Anodized aluminium star - shaped Contrast screen and central level sight hole.  
Size : 1/4 to 1.1/2" & 2" BSP / NPT  
and M12 x 1.5 to M - 46 x 2



## FILTERS & ELEMENT

### RETURN TANK MOUNTED FILTER - SM2



MODEL	Q NOM LPM	PORT BSP / NPT	P MAX BAR	FILTRATION	ELEMENT CODE
SM2 - 04. 10. 25	70	1/2"	10	10/25	SME- 04. 10. 25
SM2 - 06. 20. 25	60	3/4"		Paper	SME 06. 20. 25
SM2 - 08. 45. 25	80	1"	10	149	SME- 08.45. 25
SM2 - 10. 45. 25	120	1-1/4"		Wiremesh	SME- 10. 45. 25

### RETURN IN LINE FILTER - HFR



MODEL	Q NOM LPM	PORT	P MAX BAR	FILTRATION	ELEMENT CODE
HFR - 10.06. 25	80	3/4"	20	10/25	HFE - 10.06. 25
HFR - 10.08. 25		1"		Paper	HFE - 10.08. 25
HFR - 20.10. 25	150	1-1/4"	20	149	HFE - 20.10. 25
HFR - 20. 12. 25		1-1/2"		Wiremesh	HFE - 20.12. 25

### FILTER ELEMENT



We are manufacture different type of filter elements as per customer requirement.

### CURVED TOOTH GEAR COUPLING



NYLON SLEEVE & MS GEARS Max Bore Capacity :  
19, 28 , 38 , 48 & 65 MM

## BREATHER

### FILLER BREATHER ASSEMBLY - FSB



MODEL	Q nom LPM	MOUNTING
FSB-05 (S / N)	5 CFM	BAYONET
FSB-25 (S / N)	25 CFM	BAYONET
FSB-25 (S / N) SM	25 CFM	SIDE MOUNT
FSB-25 (S / N) PAD LOCK	25 CFM	LOCKABLE

- N for Nylon Filler Basket
- S for Steel - Filler Basket

### TANK BREATHER (TB)



MODEL	Q nom LPM	Port BSP / NPT	MOUNTING
TB-05	5 CFM	1/4" TO 3/8"	THREADED
TB-25	25 CFM	3/4" TO 1.1/2"	THREADED
TB-35	35 CFM	1.1/2"	THREADED
TB-65	65 CFM	2"	THREADED
TB-165	165 CFM	2.1/7" TO 4"	THREADED

Note : Replacement Element available in Size-TB-35, TB-65, TB-165

### BREATHER PLUGS



Models: TBP & BP  
Threaded : BSP / NPT / Metric  
Size : 1/4", 3/8", 1/2", 3/4", 1"

### CHECK VALVE / NON - RETURN VALVE



MODEL	Q NOM LPM	PORT BSP / NPT	P MAX BAR
C - 06 - 1	15	1/4"	315
C - 08 - 1	35	3/8"	
C - 10 - 1	50	1/2"	315
C - 15 - 1	120	3/4"	
C - 20 - 1	180	1"	315
C - 25 - 1	280	1 - 1/4"	
C - 30 - 1	340	1 - 1/2"	315

• Cracking Pressure 1 Bar & 5 Bar

## FLOW DIFFUSER - FD4



Model	Q NOM LPM	PORT BSP / NPT
FD4 - 050	50	3/4"
FD4 - 100	100	1"
FD4 - 200	200	1-1/2"
FD4 - 400	400	2"
FD4 - 500	500	2-1/2"
FD4 - 600	600	3"

## SEALS & PLUG

### DOWTY SEALS



Bonded / Dowty Seals are Cost Effective Solution for Bolt / Thread Sealing. Versatile, Applicable to All Threaded Bolts, Studs and clearance holes.

Model : D.S.  
Threaded : 1/8" to 2.1/2" BSP

### COPPER WASHER



Copper flat washers made from copper are often used within piping electronics, household products, and biomedical applications as copper is malleable and ductile - a biostatic surface that is a good conductor of heat and, when very pure, a good conductor of electricity.

Model : C.W.  
Threaded : 1/8" to 2" BSP

### COLLER PLUGS



The Coller plugs DIN 908 is a small easy-to-handle sub that makes up in the top of the drill collar. It has a lifting flange that serves as a safety stop when drill collars without elevator recesses are being out of the holes.

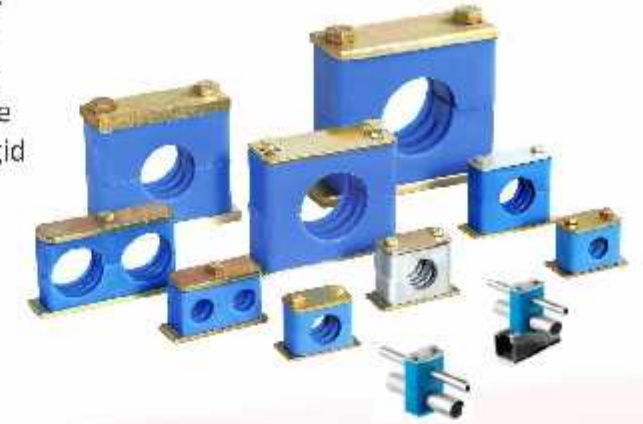
Model : COLLER PLUG  
Threaded : 1/8" to 1.1/2" BSP

## TUBE / PIPE CLAMP

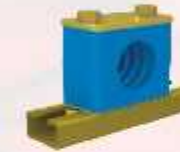
Today, clamps are widely used for providing simple, reliable dampening support for tubes, pipes, hoses and conduits in industrial and mobile hydraulic systems, process industries and electrical construction. In many installations, pipe, hose or tube clamping is required to lessen vibration, provide rigid support and prevent loosening of the joints and welds.

Fluden Clamps, with their unique 4-rib design, prevent vibration transmission. They also provide Support in both vertical and horizontal directions. This support relieves the stress caused by unequal movements in the pipe, hose or tubing.

Clamp materials can differ depending on working conditions different materials are available for temperatures ranging from cold to extreme heat up to over 400°C.



### TYPES OF CLAMPS



Clamps with mounting rails - a series of clamps can be mounted with rail nuts.

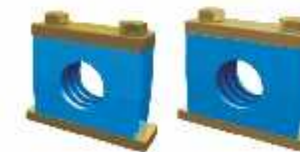


#### Standard-Duty Pipe / Tube Clamps

Clamps in polypropylene with SS304 or CS plates. Clamps manufactured to DIN 3015 - Part 1 standards.



Clamps are stackable and can also be mounted back-to-back.



Rigid pipe clamp with polypropylene / polyamide Or aluminum body - this can be Standard Duty & Heavy-Duty.



#### Heavy-Duty Pipe / Tube Clamps

Clamps in polypropylene with CS plates. Clamps manufactured to DIN 3015 - Part 2 standards.



Twin Clamp - Standard-Duty.



#### Twin Clamps

Clamps in polypropylene with metallic parts in CS. Clamps manufactured to DIN 3015 - Part 3 standards.

STANDARD-DUTY CLAMPS ARE AVAILABLE WITH MOUNTING RAILS AND RAILS NUTS.